

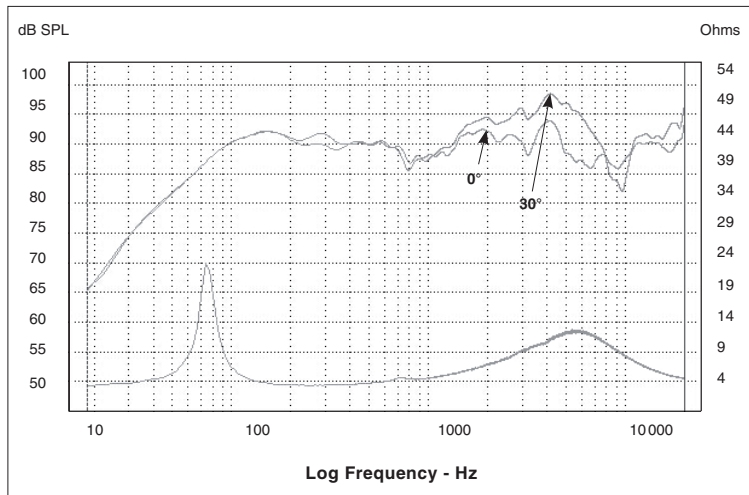
# 570 CA1

5x7" Access 1 coaxial

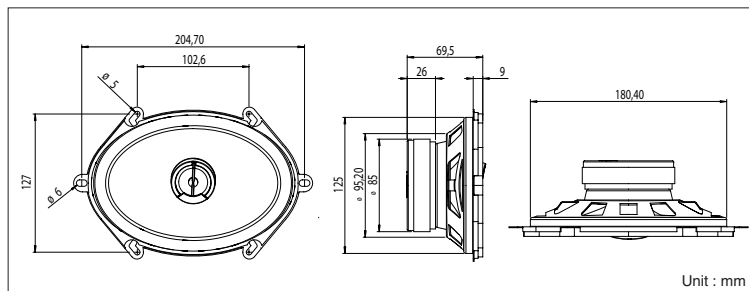
- Adjustable aluminum inverted dome tweeter
- All weather woven glass fiber cone
- 85mm (3-1/3") magnet



## Frequency Response / Impedance



## Mechanical Drawing



Focal® is a trademark of Focal-JMlab® - BP 374 - 108, rue de l'avenir - 42353 La Talaudière cedex France - Tél. [33] 04 77 43 57 00 - Fax [33] 04 77 37 65 87 - www.focal-fr.com - SCAZ070503/1

## Specifications

Nominal power	60 W	
Maximum power	120 W	
Sensitivity	91 dB	
Cone	Braided glass fiber®	
Surround	Butyl	
Nom. impedance	4 ohms	
DC resistance	2.93 ohms	
VC diameter	25 mm 1in	
VC height	11 mm	7/16 in
Former	Kapton®	
Layers	2	
Wire	Copper	
Inductance		
Xmax	2.5 mm	1/16 in
Magnet d x h	85 x 15 mm	3-1/3x9/16 in
Magnet weight	0.3 kg	0.66 lb
Flux density	1.1 T	
Gap height	5 mm	1/8 in
Net weight	0.95 kg	2.09 lb

## Parameters

Fs	77.30 Hz
Vas	9.99 l
Qts	0.84
Qes	0.95
Qms	7.63
Re	2.93 ohms
Sd	153.94 cm <sup>2</sup>
Cas	7.01 E-08 m <sup>5</sup> /N
Mas	60.47 kg/m <sup>4</sup>
Ras	3849.37 ohms.ac
Cms	2.96E-04 m/N
Mms	14.33 g
Rms	0.912 kg/s
Ces	667.57 mF
Les	6.35 mH
Res	24.54 ohms
BI	4.63 N/A
SPL	88.7 dB/W/m

## Suggested application

Load	V (l)	Fb (Hz)	F-3 (Hz)	Ql
Sealed	30	-	71	0.97
Sealed	-	-	-	-
Sealed	-	-	-	-



**FOCAL**  
THE SPIRIT OF SOUND